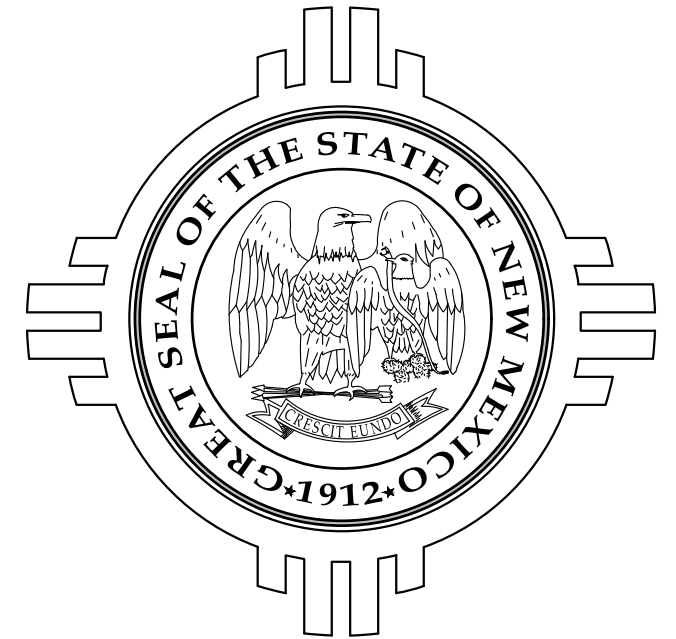


# New Mexico

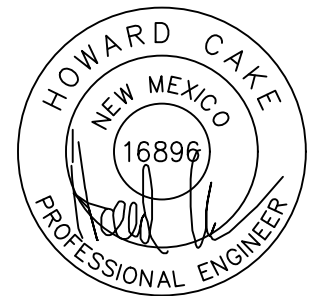
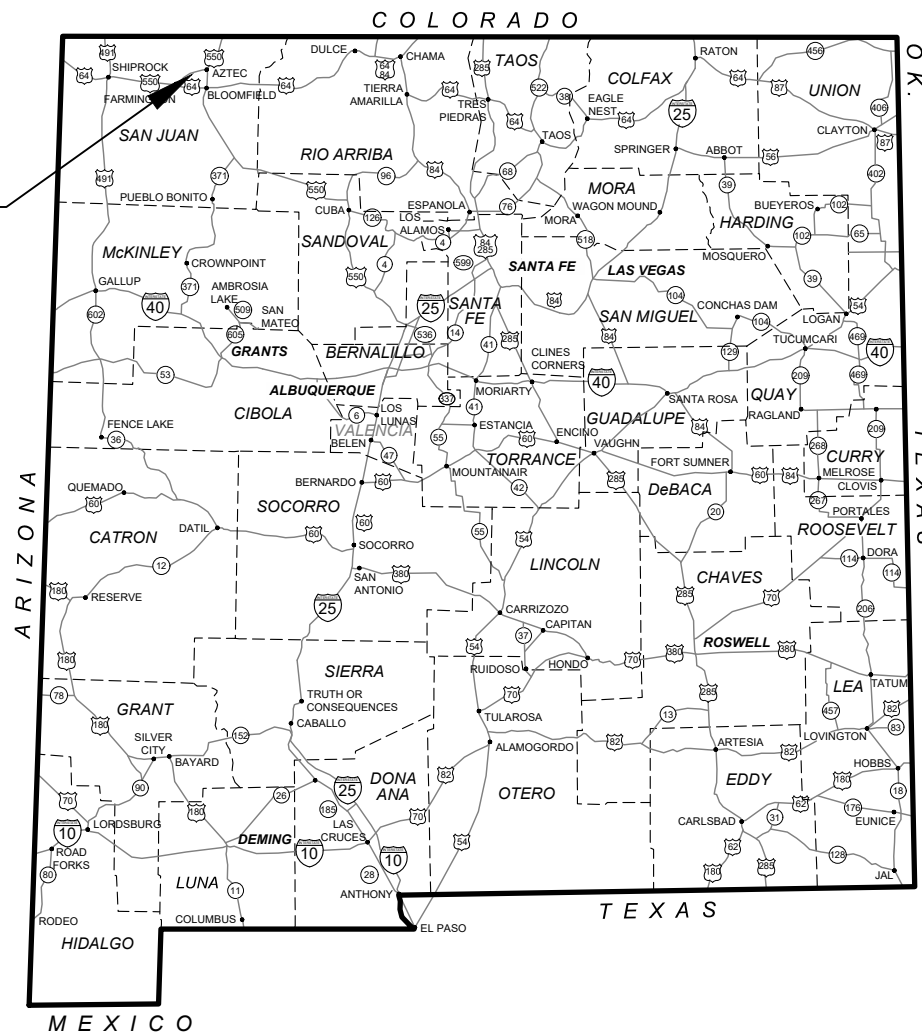
## SAN JUAN COUNTY

### CONSTRUCTION PLANS

CN 21-22-23 (CR 3500)  
SAN JUAN COUNTY



CN 21-22-23  
BRIDGE 10137



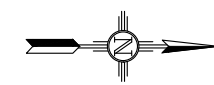
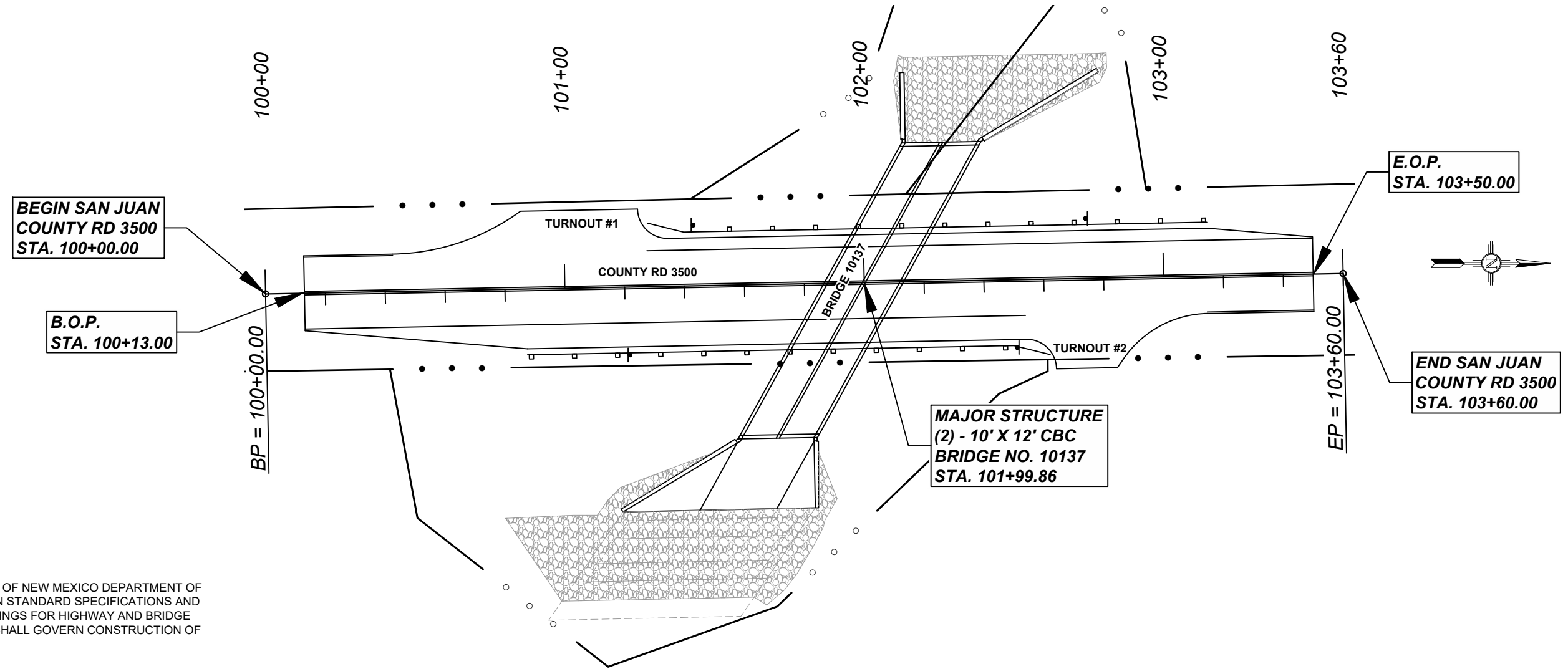
07/12/24

## FINAL DESIGN PLANS



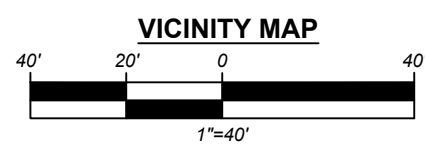
SAN JUAN COUNTY  
21-22-23

**LENGTH OF PROJECT 0.068 miles**  
THIS PROJECT BEGINS IN SECTION 22, T.30N, R.12W, N.M.P.M.  
THIS PROJECT ENDS IN SECTION 22, T.30N, R.12W, N.M.P.M.

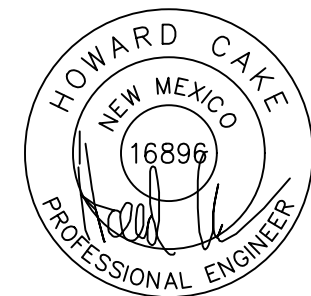


THE 2019 EDITION OF NEW MEXICO DEPARTMENT OF TRANSPORTATION STANDARD SPECIFICATIONS AND STANDARD DRAWINGS FOR HIGHWAY AND BRIDGE CONSTRUCTION SHALL GOVERN CONSTRUCTION OF THIS PROJECT.

**PROJECT CONTACT INFORMATION**  
SAN JUAN COUNTY  
**NICK PORELL**  
PUBLIC WORKS DIRECTOR  
(505) 334-4530  
  
**T.Y. LIN**  
**TATE TOLEDO**  
ROADWAY ENGINEER  
(505) 842-5822



**INTENT OF PROJECT**  
REPLACEMENT OF BRIDGE 8111 ON COUNTY ROAD 3500 ACROSS FLORA VISTA ARROYO IN SAN JUAN COUNTY.  
  
CONSTRUCT BRIDGE 10137 TO IMPROVE DRAINAGE FOR THE ARROYO, NEW PAVING, STRIPING, GUARDRAIL, AND OTHER ASSOCIATED ROADWAY IMPROVEMENTS.



07/12/24

NO.	DESCRIPTION	DATE	BY
4			
3			
2			
1			

CR 3500 OVER FLORA VISTA ARROYO  
BRIDGE 10137  
VICINITY MAP



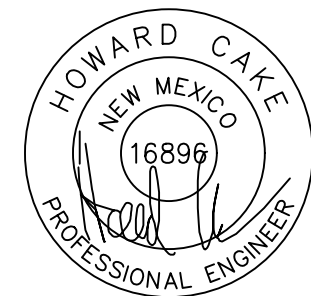
SAN JUAN COUNTY  
21-22-23

### INDEX OF SHEETS

SHEET NO.	DESCRIPTION
<b>SERIES 1</b>	
1-1	COVER SHEET
1-2	VICINITY MAP
1-3	INDEX OF SHEETS
1-4	SUMMARY OF QUANTITIES
1-5	GENERAL NOTES
	SUB-TOTAL - 5
<b>SERIES 2</b>	
2-1	TYPICAL SECTIONS
	SUB-TOTAL - 1
<b>SERIES 3</b>	
3-1	ROADWAY PLAN & PROFILE
3-2	CULVERT PLAN & PROFILE
3-3	CONCRETE BOX CULVERT DETAILS
3-4	EROSION CONTROL AND GRADING PLAN
3-5	ARROYO GRADING PLAN
	SUB-TOTAL - 5
<b>SERIES 4</b>	
4-1	TURNOUT PLAN & PROFILE
	SUB-TOTAL - 1
<b>SERIES 7</b>	
7-1	SIGNING AND STRIPING GENERAL NOTES
7-2	PERMANENT SIGNING AND STRIPING QUANITITES
7-3	PERMANENT SIGNING AND STRIPING
	SUB-TOTAL - 3

GRAND TOTAL - 15

NO.	DESCRIPTION	DATE	BY
4			
3			
2			
1			



07/12/24

CR 3500 OVER FLORA VISTA ARROYO  
BRIDGE 10137  
INDEX OF SHEETS



SAN JUAN COUNTY  
21-22-23

**SUMMARY OF QUANTITIES**

ITEM NO.	DESCRIPTION	BID UNIT	ROADWAY		PROJECT TOTAL	
			ESTIMATE	FINAL	ESTIMATE	FINAL
107000	ENVIRONMENTAL COMMITMENTS	LS			LS	
201000	CLEARING AND GRUBBING	LS			LS	
203011	ENVIRONMENTAL CONSTRUCTION MONITORING	LS			LS	
203100	BORROW	C.Y.	6,700		6,700	
203200	UNSUITABLE MATERIAL EXCAVATION	C.Y.	800		800	
206000	UNSUITABLE MATERIAL EXCAVATION	C.Y.	350		350	
206100	SELECT BACKFILL MATERIAL	C.Y.	600		600	
207000	SUBGRADE PREPARATION	S.Y.	1,900		1,900	
303180	BASE COURSE 8"	S.Y.	1,800		1,800	
407000	ASPHALT MATERIAL FOR TACK COAT	TON	1		1	
408100	PRIME COAT MATERIAL	TON	3		3	
416107	MINOR PAVING TYPE I, HMA SP-IV	S.Y.	1,700		1,700	
502600	OBSTRUCTION REMOVAL	L.F.	365		365	
511030	STRUCTURAL CONCRETE, CLASS AA	C.Y.	630		630	
540060	REINFORCING BARS GRADE 60	LB	130,000		130,000	
547000	SAFETY AND ENVIRONMENTAL REQUIREMENTS	LS			LS	
601000	REMOVAL OF STRUCTURES AND OBSTRUCTIONS	LS			LS	
601110	REMOVAL OF SURFACING	S.Y.	600		600	
602000	RIPRAP CLASS A	C.Y.	150		150	
602005	RIPRAP CLASS A (NON-ENCLOSED)	C.Y.	150		150	
602010	RIPRAP CLASS B	C.Y.	70		70	
602200	GABIONS	C.Y.	40		40	
603281	SWPPP PLAN PREPARATION AND MAINTENANCE	LS			LS	
606001	SINGLE FACE W-BEAM GUARDRAIL	L.F.	365		365	
606052	END TREATMENT TL-2 END TERMINAL	EACH	2		2	
606055	END TREATMENT DRIVEWAY END ANCHOR	EACH	2		2	
617000	VIBRATION MONITORING	LS			LS	
617003	VIDEO RECORDING	LS			LS	
618000	TRAFFIC CONTROL MANAGEMENT	LS			LS	
621000	MOBILIZATION	LS			LS	
632000	CLASS A SEEDING	ACRE	1		1	
667110	MAIL BOX INSTALLATION-SINGLE	EACH	1		1	
701100	STEEL POST AND BASE POST FOR ALUMINUM PANEL SIGNS	L.F.	28		28	
702810	TRAFFIC CONTROL DEVICES FOR CONSTRUCTION	LS			LS	
703003	OBJECT MARKER TYPE 3	EACH	4		4	
704700	HOT THERMOPLASTIC PAVEMENT MARKINGS 4"	L.F.	1,210		1,210	
801000	CONSTRUCTION STAKING BY THE CONTRACTOR	LS			LS	

NO.	DESCRIPTION	DATE	BY
4			
3			
2			
1			



07/12/24

CR 3500 OVER FLORA VISTA ARROYO  
BRIDGE 10137  
SUMMARY OF QUANTITIES

**GENERAL NOTES**

1. THE CONTRACTOR SHALL ABIDE BY ALL LOCAL, STATE, AND FEDERAL LAWS, RULES AND REGULATIONS WHICH APPLY TO THE CONSTRUCTION OF THESE IMPROVEMENTS.
2. ALL WORK DETAILED ON THESE PLANS TO BE PERFORMED, EXCEPT AS OTHERWISE STATED OR PROVIDED HEREON, SHALL BE CONSTRUCTED IN ACCORDANCE WITH NMDOT STANDARD SPECIFICATIONS FOR HIGHWAY AND BRIDGE CONSTRUCTION, 2019 EDITION.
3. THE CONTRACTOR SHALL ASSUME THE SOLE AND COMPLETE RESPONSIBILITY FOR THE JOB SITE CONDITIONS DURING THE COURSE OF CONSTRUCTION OF THIS PROJECT, INCLUDING SAFETY OF ALL PERSONS AND PROPERTY. THIS REQUIREMENT SHALL APPLY CONTINUOUSLY AND NOT BE LIMITED TO NORMAL WORKING HOURS. THE CONTRACTOR SHALL DEFEND, INDEMNIFY, AND HOLD HARMLESS THE OWNER AND ENGINEER FROM ANY AND ALL LIABILITY, REAL OR ALLEGED, IN CONNECTION WITH THE PERFORMANCE OF WORK ON THIS PROJECT, EXCEPT LIABILITY ARISING FROM THE SOLE NEGLIGENCE OF THE OWNER OR ENGINEER.
4. THE CONTRACTOR SHALL OBTAIN ALL NECESSARY PERMITS PRIOR TO CONSTRUCTION.
5. ALL STREET STRIPING, ALTERED OR DESTROYED, SHALL BE THERMOPLASTIC REFLECTORIZED PAVEMENT MARKINGS TO SAME LOCATION AS EXISTING, OR AS INDICATED BY THIS PLAN SET.
6. NO PAVING ACTIVITIES SHALL BE STARTED UNTIL THE LOCATION AND SERVICEABILITY OF ALL UNDERGROUND UTILITIES WITHIN THE ROADWAY ARE APPROVED BY THE COUNTY.
7. THE ENGINEER HAS UNDERTAKEN NO FIELD VERIFICATION OF THE LOCATION, DEPTH, SIZE, OR TYPE OF EXISTING UNDERGROUND UTILITY LINES, MAKES NO REPRESENTATION PERTAINING THERETO, AND ASSUMES NO RESPONSIBILITY OR LIABILITY THEREFOR. THE CONTRACTOR SHALL INFORM ITSELF OF THE LOCATION OF ANY UTILITY LINE IN OR NEAR THE AREA OF THE WORK IN ADVANCE OF AND DURING EXCAVATION WORK. THE CONTRACTOR IS FULLY RESPONSIBLE FOR ANY AND ALL DAMAGE CAUSED BY ITS FAILURE TO LOCATE, IDENTIFY, AND PRESERVE ANY AND ALL EXISTING UTILITIES. ANY PREVIOUSLY UNKNOWN UTILITY RELOCATIONS IDENTIFIED BY THE CONTRACTOR AND APPROVED BY THE COUNTY PROJECT MANAGER SHALL BE COVERED THROUGH THE UTILITY RELOCATION ALLOWANCE ESTABLISHED FOR THIS PROJECT.
8. THE CONTRACTOR IS TO SUPPORT AND MAINTAIN THE INTEGRITY OF ALL UNDERGROUND WATER, WASTEWATER, REUSE WATER, TELEPHONE, ELECTRIC CABLES AND CABLE TELEVISION UTILITIES AT NO ADDITIONAL COST TO THE OWNER. CABLE IS TO BE SUPPORTED AT A MAXIMUM OF EVERY FIFTEEN (15) FEET. THE CONTRACTOR SHALL COORDINATE WITH AND MAKE NECESSARY PAYMENT (IF ANY) TO UTILITY OWNER FOR DE-ENERGIZATION OF CABLES OR SUPPORT OF CABLES BY THE UTILITY OWNER.
9. CONTRACTOR, AT HIS EXPENSE, IS RESPONSIBLE FOR DRAINAGE MANAGEMENT AND EROSION CONTROL AT ALL TIMES DURING THE CONSTRUCTION PERIOD.
10. THE CONTRACTOR, AT HIS EXPENSE, SHALL PROMPTLY CLEAN UP ANY MATERIAL EXCAVATED WITHIN THE PUBLIC RIGHT-OF-WAY OR PRIVATE ROADWAY EASEMENTS SO THAT THE EXCAVATED MATERIAL IS NOT SUSCEPTIBLE TO BEING WASHED DOWN THE STREET, PRIVATE PROPERTY, OR INTO ANY PUBLIC DRAINAGE FACILITY.
11. CONTRACTOR, THROUGH BID ITEM #702810, SHALL BE RESPONSIBLE TO PROVIDE AND MAINTAIN ALL CONSTRUCTION SIGNING UNTIL THE PROJECT HAS BEEN ACCEPTED BY SAN JUAN COUNTY.
12. ALL EXCAVATION, TRENCHING, AND SHORING ACTIVITIES MUST BE CARRIED-OUT IN ACCORDANCE WITH OSHA 29 CFR 1926.650 SUBPART P.
13. IF A PAVEMENT DROP-OFF IS CREATED DURING THE COURSE OF CONSTRUCTION, THE CONTRACTOR SHALL INITIATE PROTECTIVE ACTION TO MAINTAIN A SMOOTH TRANSITION. THIS WORK SHALL AT THE CONTRACTOR'S EXPENSE. NO ADDITIONAL PAYMENT SHALL BE MADE.
14. PRIOR TO CONSTRUCTION, CONTRACTOR SHALL EXCAVATE AND VERIFY THE HORIZONTAL AND VERTICAL LOCATIONS OF ALL POTENTIAL OBSTRUCTIONS. SHOULD A CONFLICT EXIST, THE CONTRACTOR SHALL NOTIFY THE COUNTY PROJECT MANAGER OR CONSTRUCTION OBSERVER SO THAT THE CONFLICT CAN BE RESOLVED WITH A MINIMUM AMOUNT OF DELAY.
15. ALL ELECTRICAL, TELEPHONE, CABLE TV, GAS AND OTHER UTILITY LINES, CABLES AND APPURTENANCES ENCOUNTERED DURING CONSTRUCTION THAT REQUIRE RELOCATION, SHALL BE COORDINATED WITH THAT UTILITY. THE CONTRACTOR SHALL BE RESPONSIBLE FOR COORDINATION OF ALL NECESSARY UTILITY ADJUSTMENTS. NO ADDITIONAL COMPENSATION WILL BE ALLOWED FOR DELAYS OR INCONVENIENCES CAUSED BY UTILITY COMPANY WORK CREWS. THE CONTRACTOR MAY BE REQUIRED TO RESCHEDULE HIS ACTIVITIES TO ALLOW UTILITY CREWS TO PERFORM THEIR REQUIRED WORK.
16. THE CONTRACTOR IS RESPONSIBLE FOR PROTECTING THE EXISTING UTILITY LINES WITHIN THE CONSTRUCTION AREA. ANY DAMAGE TO EXISTING FACILITIES CAUSED BY CONSTRUCTION ACTIVITY SHALL BE REPAIRED OR REPLACED AT THE CONTRACTOR'S EXPENSE AND APPROVED BY THE CONSTRUCTION OBSERVER.
17. CONSTRUCTION ACTIVITY SHALL BE LIMITED TO RIGHT-OF-WAY AND/OR PROJECT LIMITS. ANY DAMAGE TO ADJACENT PROPERTIES RESULTING FROM THE CONSTRUCTION PROCESS IS THE RESPONSIBILITY OF THE CONTRACTOR. ANY COSTS INCURRED FOR REPAIRS SHALL BE THE COST OF THE CONTRACTOR.
18. THE CONTRACTOR SHALL BE RESPONSIBLE TO REPLACE AT HIS EXPENSE ANY AND ALL PROPERTY CORNERS DESTROYED DURING CONSTRUCTION. ALL PROPERTY CORNERS MUST BE RESET BY A REGISTERED LAND SURVEYOR.
19. ALL BARRICADES AND CONSTRUCTION SIGNING SHALL CONFORM TO APPLICABLE SECTIONS OF THE M.U.T.C.D., U.S. DEPARTMENT OF TRANSPORTATION, LATEST EDITION.
20. THE CONTRACTOR SHALL MAINTAIN ALL CONSTRUCTION BARRICADES AND SIGNING AT ALL TIMES. THE CONTRACTOR SHALL VERIFY THE PROPER LOCATION OF ALL BARRICADING AT THE END AND BEGINNING OF EACH DAY.
21. THE CONTRACTOR SHALL ASSUME RESPONSIBILITY FOR ANY DAMAGE TO EXISTING PAVEMENTS, PAVEMENT MARKINGS, SIGNAGE, CURB & GUTTER, DRIVEPADS, ADA CURB RAMPS, AND SIDEWALK DURING CONSTRUCTION, APART FROM THOSE SECTIONS INDICATED FOR REMOVAL ON THE PLANS AND SHALL REPAIR OR REPLACE PER NMDOT STANDARDS, AT HIS OWN EXPENSE.
22. THE CONTRACTOR SHALL CONFORM TO ALL CITY, COUNTY, STATE AND FEDERAL DUST CONTROL MEASURES AND REQUIREMENTS AND WILL BE RESPONSIBLE FOR PREPARING AND OBTAINING ALL NECESSARY APPLICATIONS AND APPROVALS.
23. GUARDS/POSITIVE PROTECTION SHALL BE LOCATED ALONG OPEN-SIDED WALKING SURFACES THAT ARE LOCATED MORE THAN 30 INCHES MEASURED VERTICALLY TO THE FLOOR OR GRADE BELOW AT ANY POINT WITHIN 36 INCHES HORIZONTALLY TO THE EDGE OF THE OPEN SIDE. GUARDS SHALL BE IN ACCORDANCE WITH SECTION 1016 OF THE 2018 IBC. IF THIS SITUATION OCCURS THE CONTRACTOR SHALL NOTIFY THE COUNTY PROJECT MANAGER PRIOR TO PROCEEDING.
24. WARPING OF SLOPES: THE CONTRACTOR SHALL WARP SLOPES WHERE NECESSARY TO STAY WITHIN THE RIGHT OF WAY OR TEMPORARY CONSTRUCTION EASEMENT LIMITS, SUBJECT TO THE APPROVAL OF THE COUNTY PROJECT MANAGER.
25. CONTRACTOR TO TEST SUBGRADE R-VALUE PRIOR TO CONSTRUCTION. IN THE EVENT THE R-VALUE IS LESS THAN 40, REMOVE 2 FEET OF SUBGRADE MATERIAL AND IMPORT MATERIAL WITH R-VALUE GREATER THAN 40 OR CONTACT THE ENGINEER IMMEDIATELY SO THE PAVEMENT SECTION CAN BE MODIFIED.
26. AS-BUILTS: THE CONTRACTOR SHALL MAINTAIN AN UP TO DATE SET OF AS-BUILT PLANS FOR THE PROJECT. THESE PLANS SHALL BE KEPT CURRENT, WITHIN TWO WEEKS, AT ALL TIMES AND SHALL BE SUBJECT TO REVIEW BY THE PROJECT ENGINEER THROUGHOUT THE PROJECT AND WILL BE REVIEWED BY THE PROJECT ENGINEER FOR ACCURACY AND COMPLETENESS AT LEAST ONCE EVERY 30 DAYS. THE FINAL AS-BUILT PLANS SHALL BE SUBMITTED AND ACCEPTED BY THE COUNTY PROJECT MANAGER PRIOR TO FINAL PAYMENT. PREPARATION OF AS-BUILTS SHALL BE INCIDENTAL TO BID ITEM #621000.
27. VIBRATION MONITORING AND VIDEO TAPING DOCUMENTATION SHALL BE PERFORMED IN AND AROUND ALL STRUCTURES. "STRUCTURE" IS DEFINED AS BUILDINGS, RETAINING AND PRIVACY WALLS, END WALLS, DROP INLETS, CATCH BASINS, SEWER AND SERVICE PIPES, DRAINS AND OTHER FEATURES THAT MAY BE ENCOUNTERED DURING CONSTRUCTION. THE CONSTRUCTION AREA AND AREAS ADJACENT TO THE LIMITS OF CONSTRUCTION SHALL ALSO BE VIDEO TAPED. VIBRATION MONITORING AND VIDEO TAPING DOCUMENTATION SHALL BE PAID BY BID ITEM #617003.



SAN JUAN COUNTY  
21-22-23

NO.	DESCRIPTION	DATE	BY
4			
3			
2			
1			

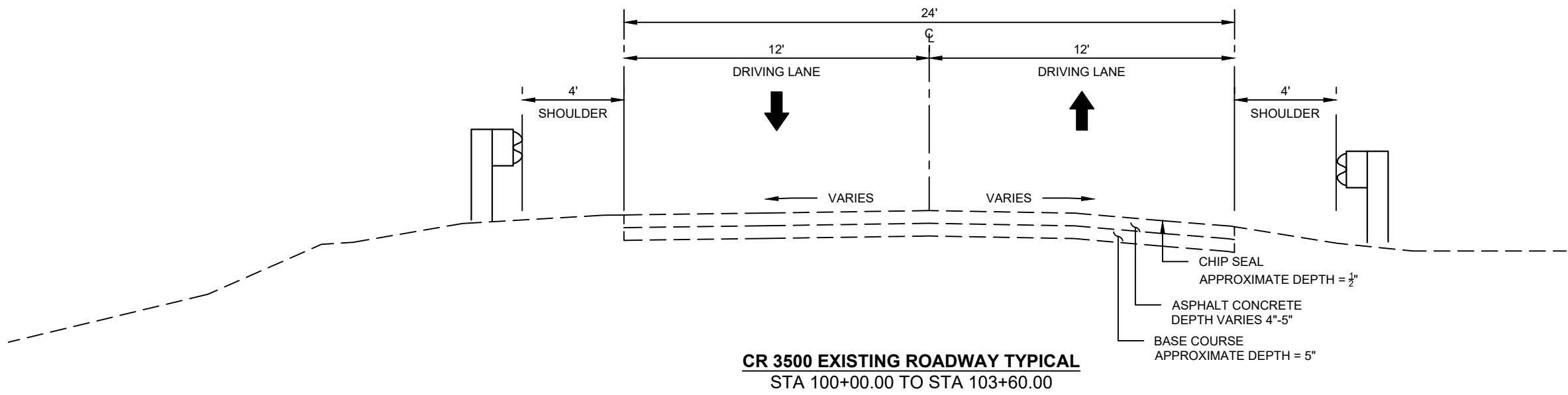
CR 3500 OVER FLORA VISTA ARROYO  
BRIDGE 10137  
GENERAL NOTES



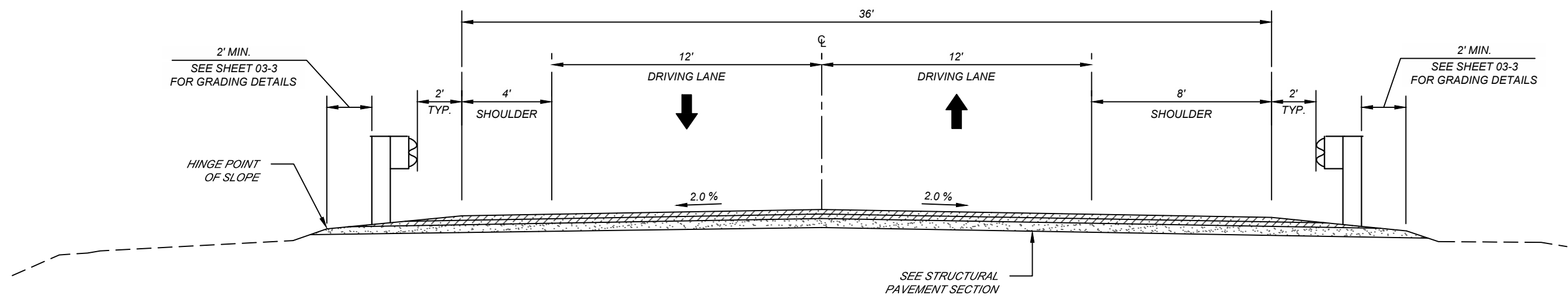
07/12/24



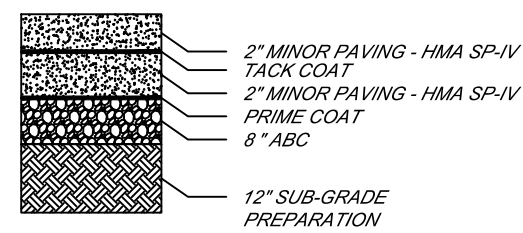
SAN JUAN COUNTY  
21-22-23



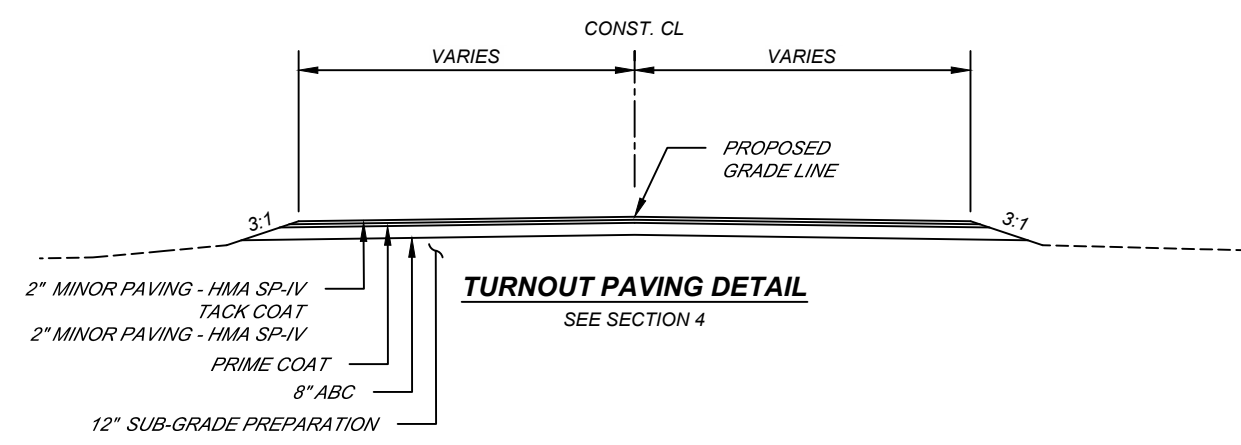
**CR 3500 EXISTING ROADWAY TYPICAL**  
STA 100+00.00 TO STA 103+60.00



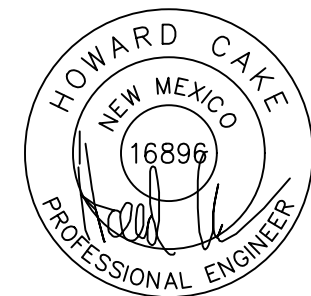
**CR 3500 PROPOSED ROADWAY TYPICAL**  
STA 100+13.00 TO STA 103+50.00



**STRUCTURAL PAVEMENT**  
NOT TO SCALE



**TURNOUT PAVING DETAIL**  
SEE SECTION 4



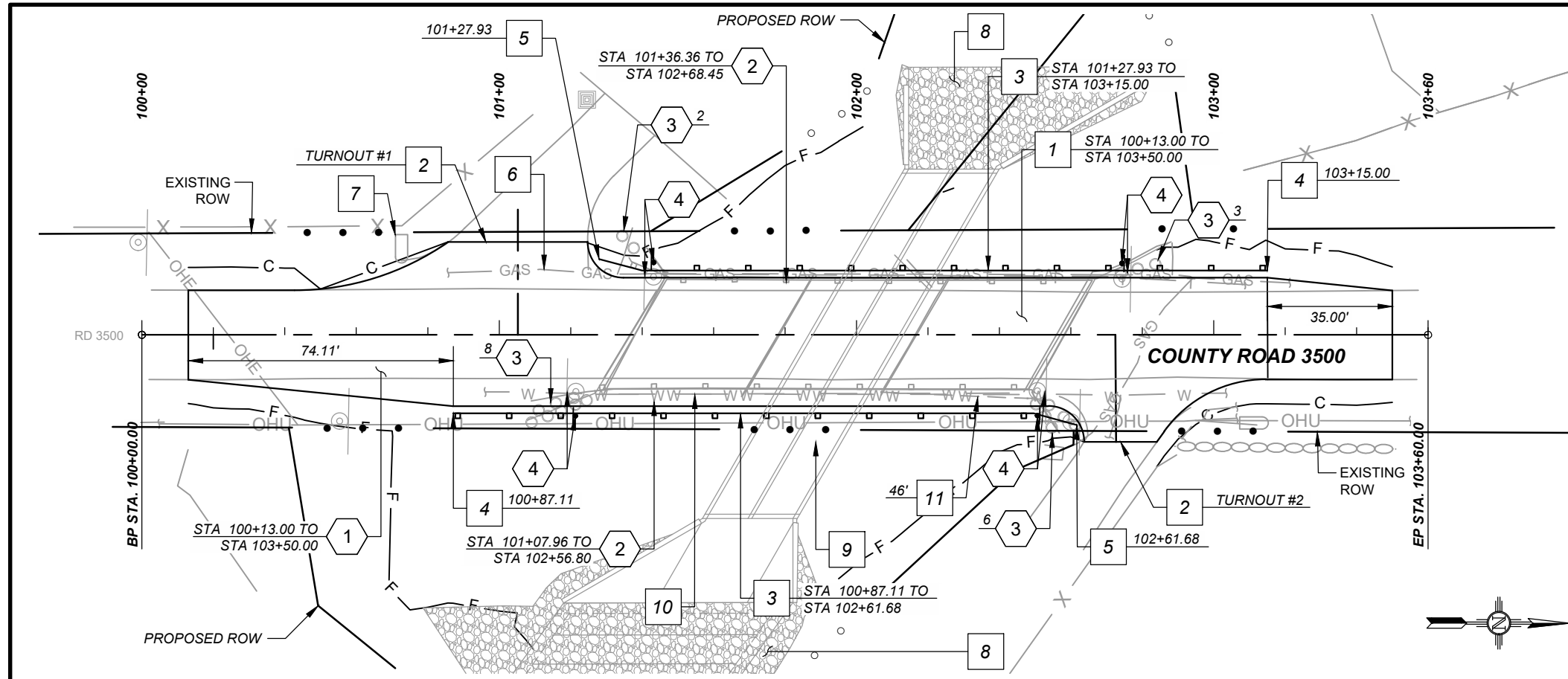
07/12/24

NO.	DESCRIPTION	DATE	BY
4			
3			
2			
1			

CR 3500 OVER FLORA VISTA ARROYO  
BRIDGE 10137  
TYPICAL SECTIONS



SAN JUAN COUNTY  
21-22-23



**CONSTRUCTION NOTES**

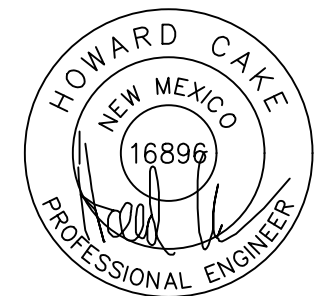
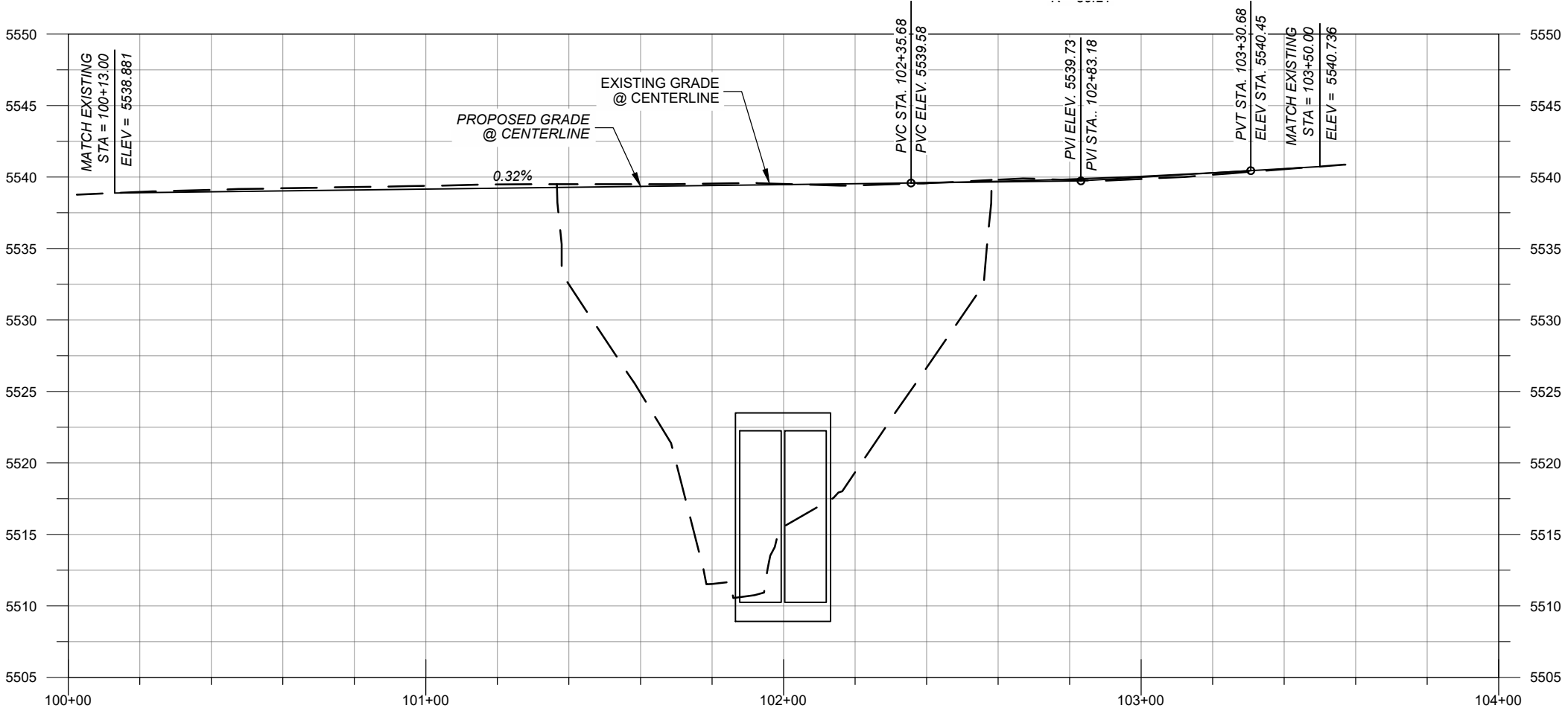
- 1 BUILD NEW ROADWAY PAVEMENT WITH SUBGRADE PREPARATION. SEE STRUCTURAL PAVEMENT SECTION ON SHEET 02-1.
- 2 CONSTRUCT PAVED TURNOUT PER DETAILS ON SHEET 04-1.
- 3 INSTALL NEW GUARDRAIL PER NMDOT STD. DWG. 606-GR31.
- 4 INSTALL TL-2 END TERMINAL PER NMDOT STD. DWG. 606-GR31-8/20
- 5 INSTALL GUARDRAIL DRIVEWAY END ANCHOR PER NMDOT STD. DWG. 606-GR31-10/20
- 6 COORDINATE RELOCATION OF THE EXISTING GAS LINE, LOCATION TO BE DETERMINED BY COUNTY PROJECT MANAGER AND UTILITY COMPANY. INCIDENTAL TO MOBILIZATION.
- 7 REMOVE AND RELOCATE EXISTING MAILBOX. LOCATION TO BE DETERMINED BY COUNTY PROJECT MANAGER.
- 8 INSTALL RIP RAP EROSION CONTROL WITH GEOSYNTHETIC FILTER FABRIC PER NMDOT STD. DWG. 602-02. SEE SHEET 03-4 FOR DETAILS.
- 9 INSTALL 10"x12" CONCRETE BOX CULVERT DOUBLE OPENING, PER NMDOT STD. DWG. 511-63.
- 10 COORDINATE RELOCATION OF EXISTING WATERLINE, LOCATION TO BE DETERMINED BY COUNTY PROJECT MANAGER AND UTILITY COMPANY. INCIDENTAL TO MOBILIZATION.
- 11 REMOVE EXISTING CULVERT. INLET NOT FOUND. TO BE COORDINATED BY COUNTY PROJECT MANAGER AND UTILITY COMPANY.

PLAN DRAWING SCALE: 1" = 40'

HORIZONTAL SCALE: 1" = 40' VERTICAL SCALE: 1" = 10'

**REMOVAL NOTES**

- 1 REMOVE EXISTING ASPHALT PAVEMENT.
- 2 REMOVE EXISTING GUARDRAIL.
- 3 REMOVE EXISTING BOLLARD/POLE.
- 4 REMOVE AND DISPOSE EXISTING SIGN. SEE SHEET 07-3 FOR NEW SIGN DETAILS.



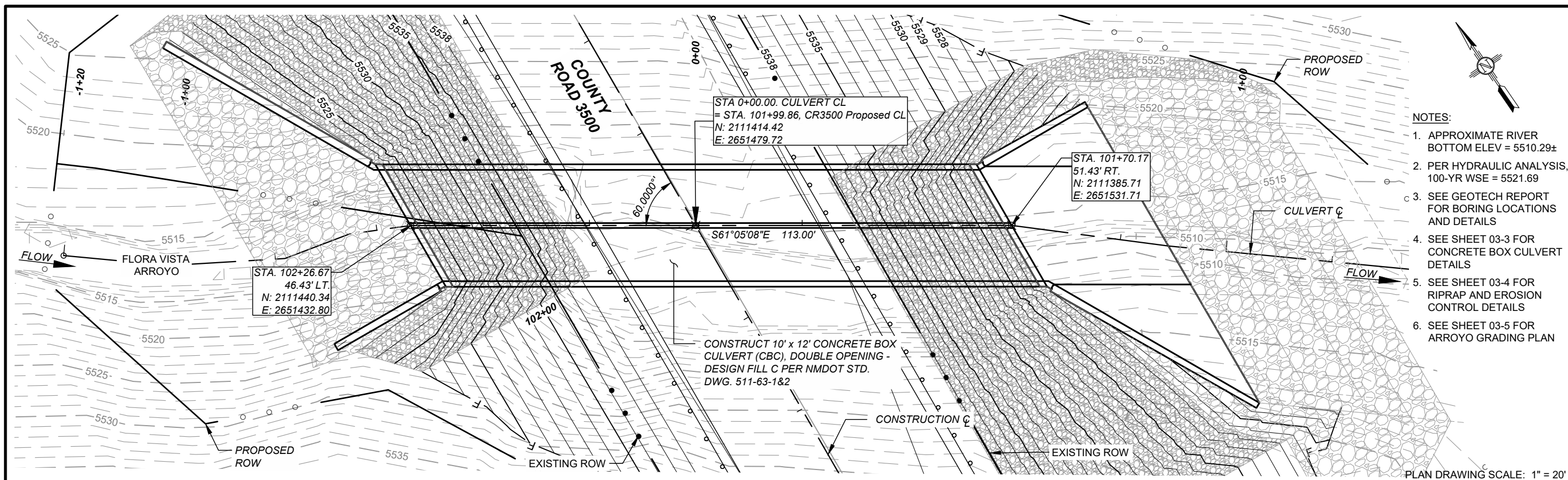
07/12/24

NO.	DESCRIPTION	DATE	BY
4			
3			
2			
1			

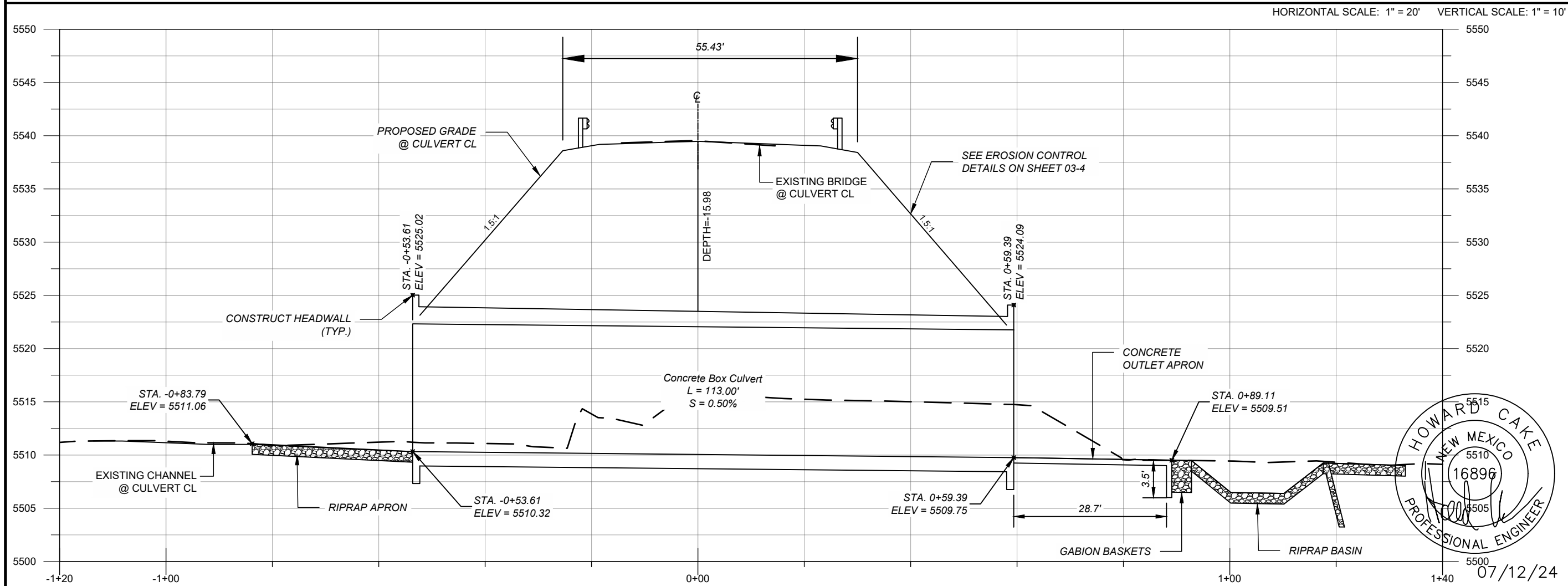
CR 3500 OVER FLORA VISTA ARROYO  
BRIDGE 10137  
ROADWAY PLAN AND PROFILE



SAN JUAN COUNTY  
21-22-23

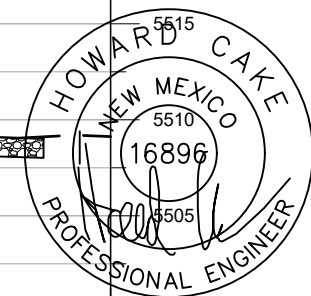


- NOTES:
1. APPROXIMATE RIVER BOTTOM ELEV = 5510.29±
  2. PER HYDRAULIC ANALYSIS, 100-YR WSE = 5521.69
  3. SEE GEOTECH REPORT FOR BORING LOCATIONS AND DETAILS
  4. SEE SHEET 03-3 FOR CONCRETE BOX CULVERT DETAILS
  5. SEE SHEET 03-4 FOR RIPRAP AND EROSION CONTROL DETAILS
  6. SEE SHEET 03-5 FOR ARROYO GRADING PLAN

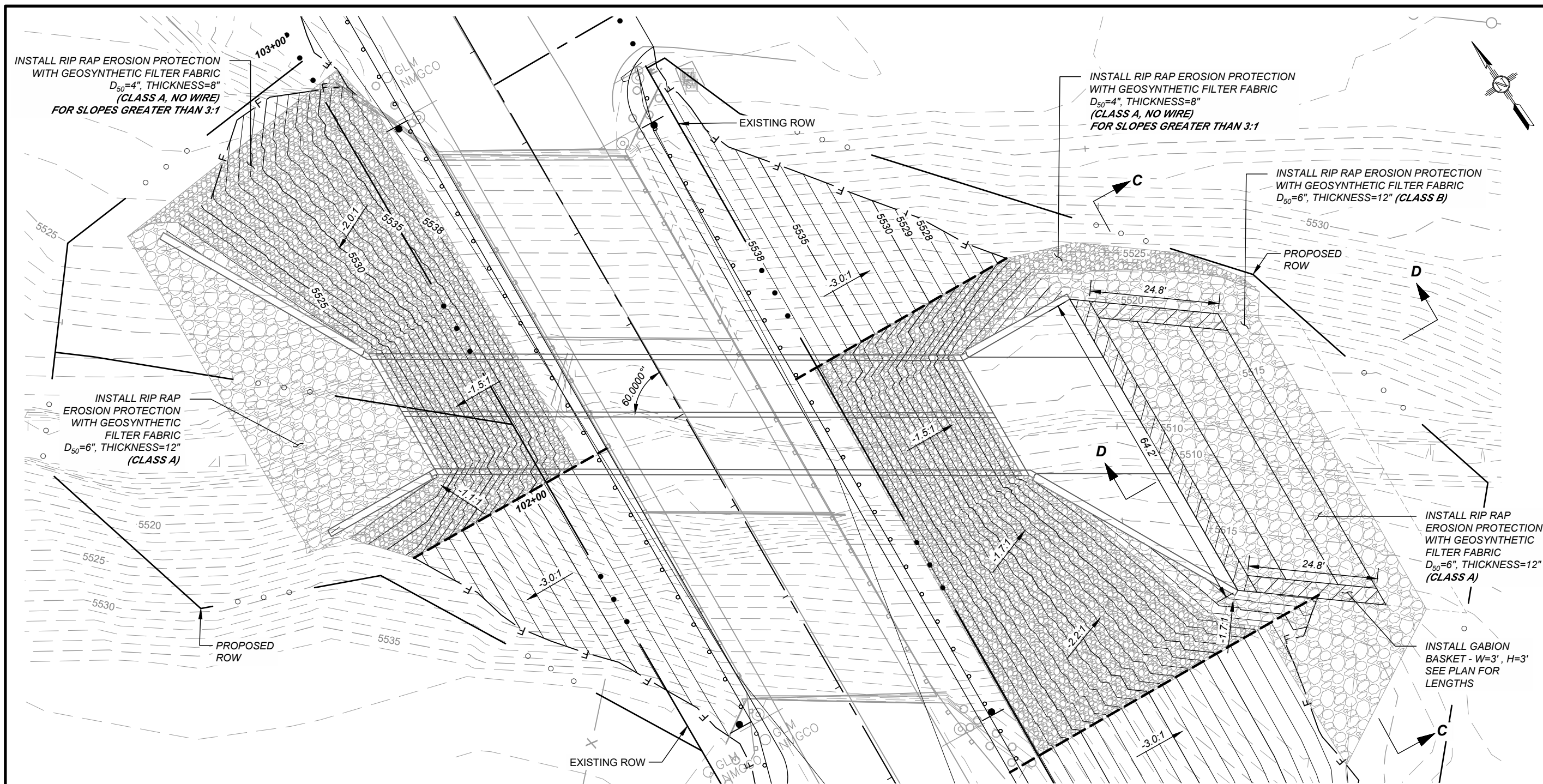


NO.	DESCRIPTION	DATE	BY
4			
3			
2			
1			

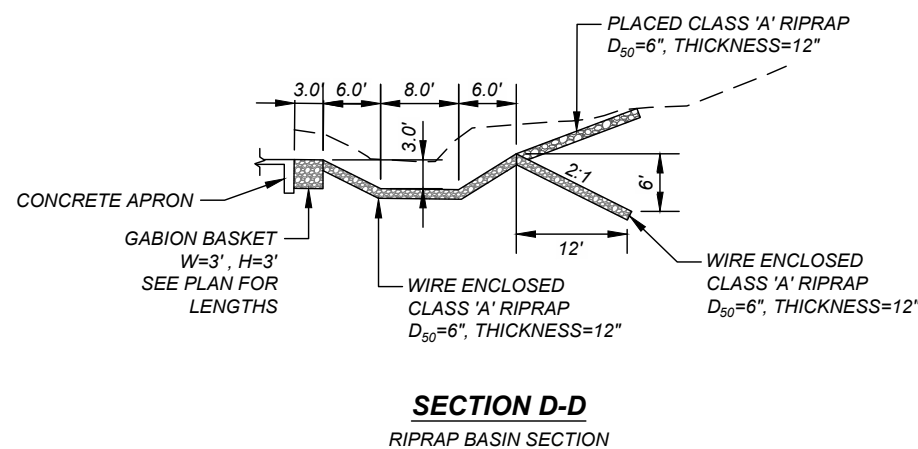
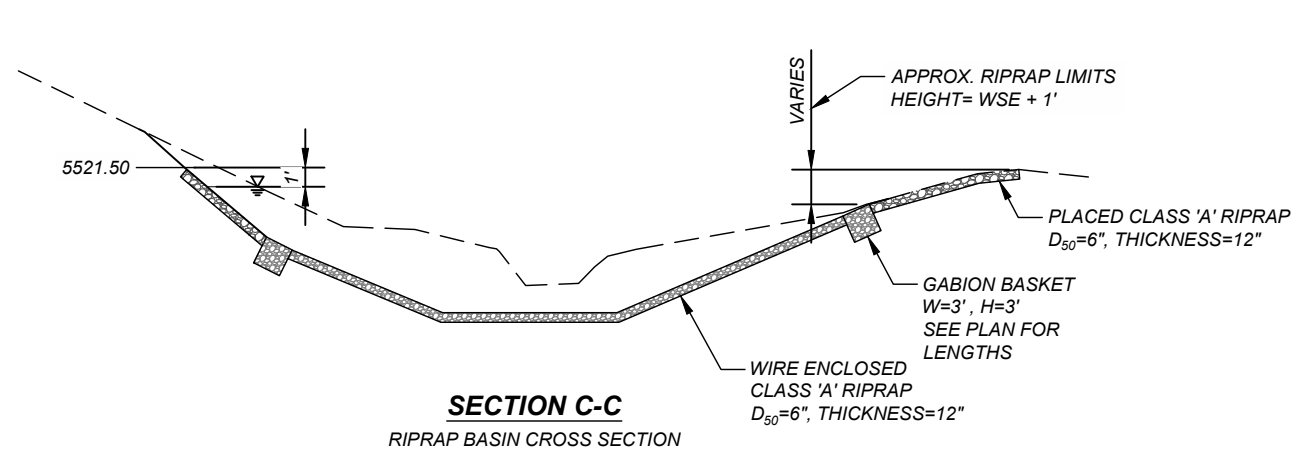
CR 3500 OVER FLORA VISTA ARROYO  
BRIDGE 10137  
CULVERT PLAN AND PROFILE







NO.	DESCRIPTION	DATE	BY
4			
3			
2			
1			
NO.			



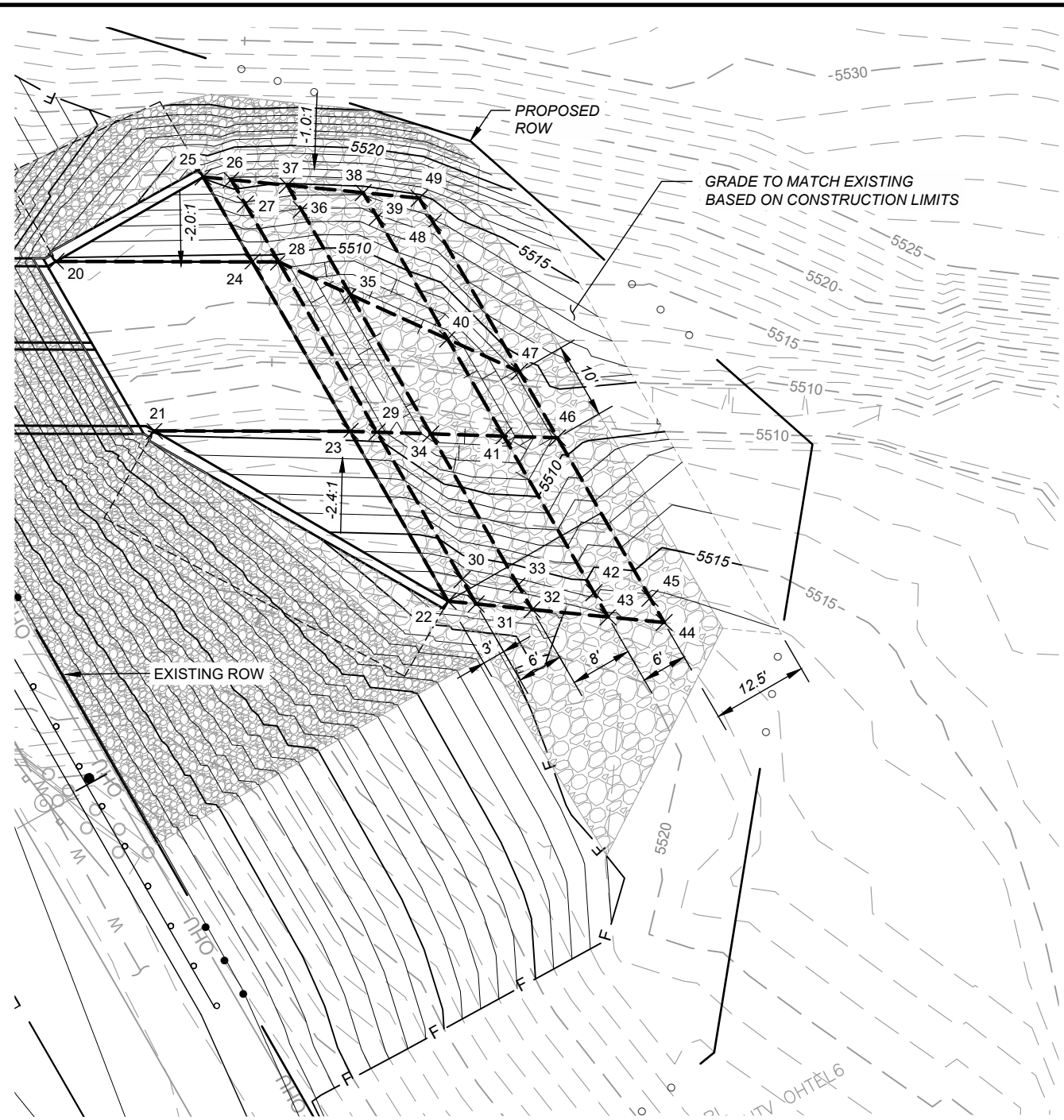
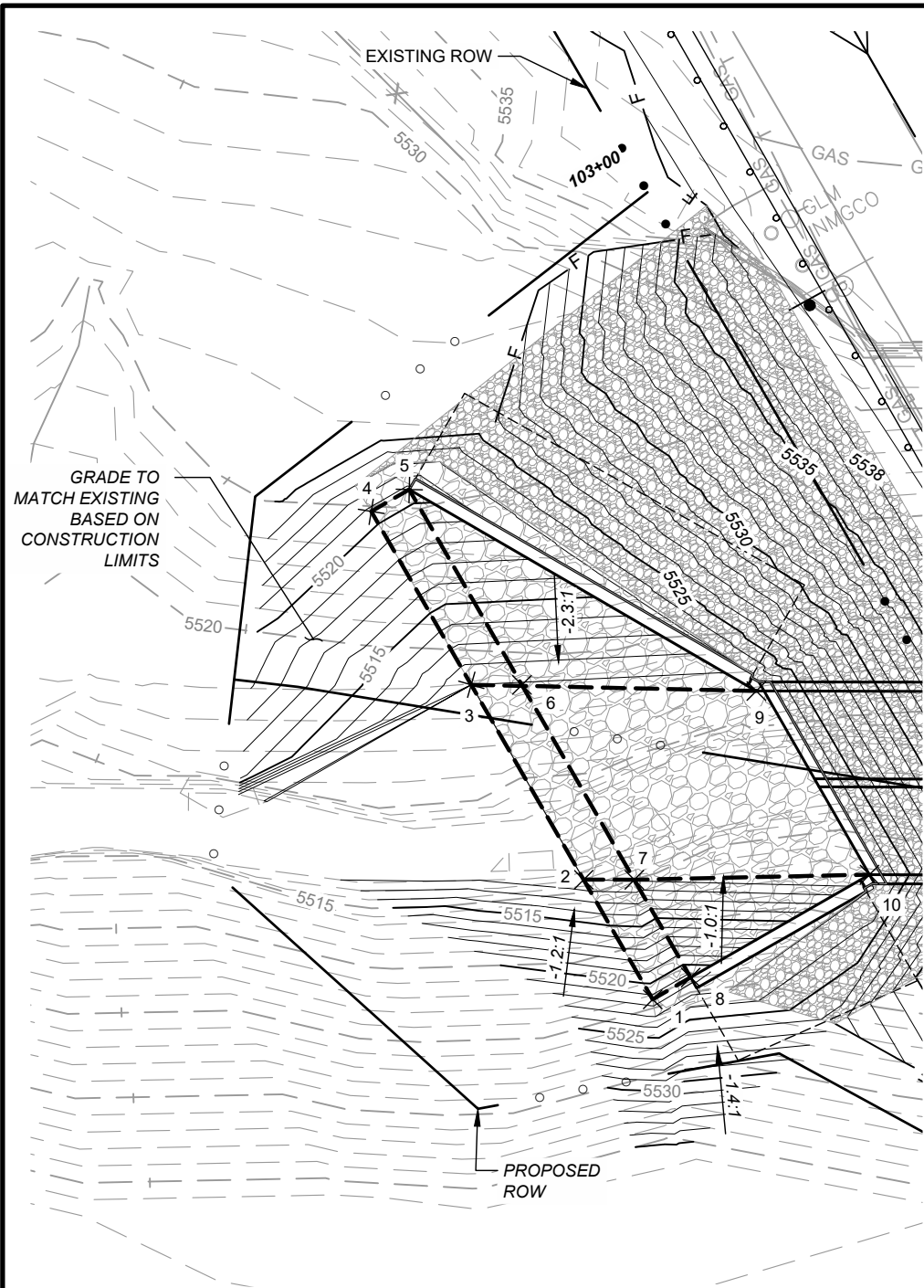
07/12/24



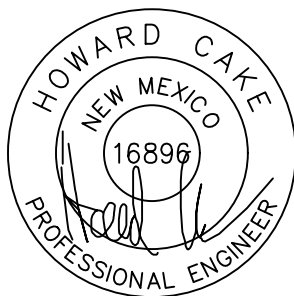
SAN JUAN COUNTY  
21-22-23

NO.	DESCRIPTION	DATE	BY
4			
3			
2			
1			

CR 3500 OVER FLORA VISTA ARROYO  
BRIDGE 10137  
ARROYO GRADING PLAN



**LEGEND**  
--- GRADE BREAKS



07/12/24

Point Table				
Point #	Raw Description	Elevation	Northing	Easting
1	END APRON	5521.393	2111427.7165	2651404.5005
2	END APRON	5511.000	2111443.4729	2651404.1718
3	END APRON	5511.000	2111469.1252	2651403.6366
4	END APRON	5520.689	2111491.9413	2651403.1605
5	END WINGWALL	5520.689	2111492.0456	2651408.1594
6	APRON	5510.875	2111466.3306	2651408.6960
7	APRON	5510.880	2111440.6783	2651409.2312
8	END WINGWALL	5521.393	2111427.8208	2651409.4994
9	END HEADWALL	5510.320	2111452.8405	2651431.7960
10	END HEADWALL	5510.320	2111428.2666	2651433.0243

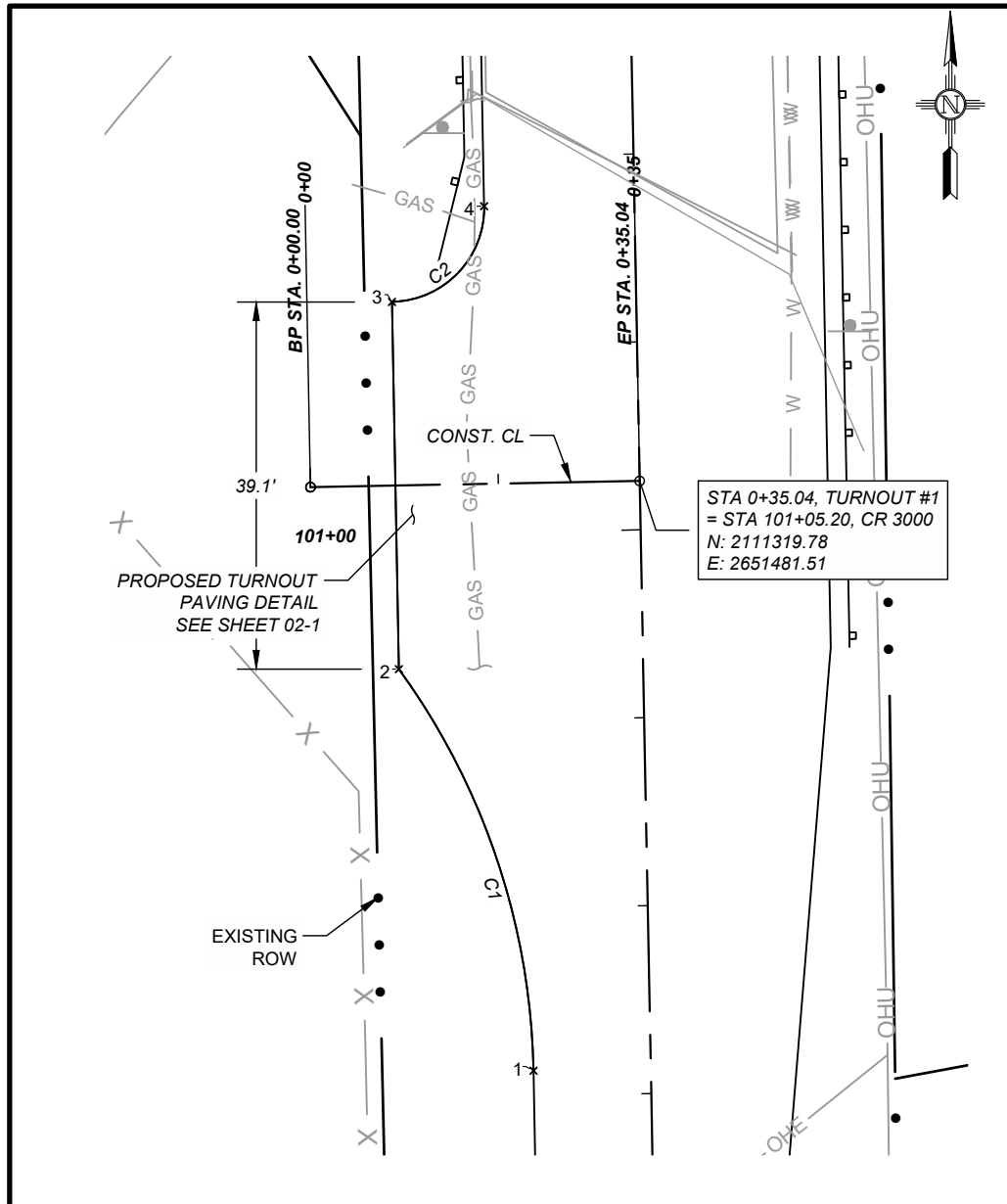
Point Table				
Point #	Raw Description	Elevation	Northing	Easting
20	END HEADWALL	5509.750	2111397.8043	2651532.7573
21	END HEADWALL	5509.750	2111372.1107	2651533.3672
22	END APRON	5518.575	2111334.0010	2651556.3433
23	END APRON	5509.510	2111359.7160	2651555.8068
24	END APRON	5509.510	2111385.3683	2651555.2716
25	END APRON	5515.132	2111398.2258	2651555.0033
26	START BASIN	5515.703	2111396.1395	2651558.0475
27	START BASIN *	5513.858	2111392.4498	2651558.1245
28	START BASIN	5509.478	2111383.6915	2651558.3072
29	START BASIN	5509.478	2111357.9209	2651558.8449

Point Table				
Point #	Raw Description	Elevation	Northing	Easting
30	START BASIN *	5517.137	2111335.6044	2651559.3105
31	START BASIN	5518.404	2111331.9147	2651559.3875
32	BASIN	5518.062	2111327.7422	2651565.4759
33	BASIN *	5516.454	2111331.4319	2651565.3989
34	BASIN	5506.478	2111354.3308	2651564.9211
35	BASIN	5506.478	2111375.3999	2651564.4815
36	BASIN *	5512.918	2111388.2773	2651564.2128
37	BASIN	5514.763	2111391.9669	2651564.1358
38	BASIN	5514.144	2111386.3138	2651572.3846
39	BASIN *	5512.852	2111382.6241	2651572.4616

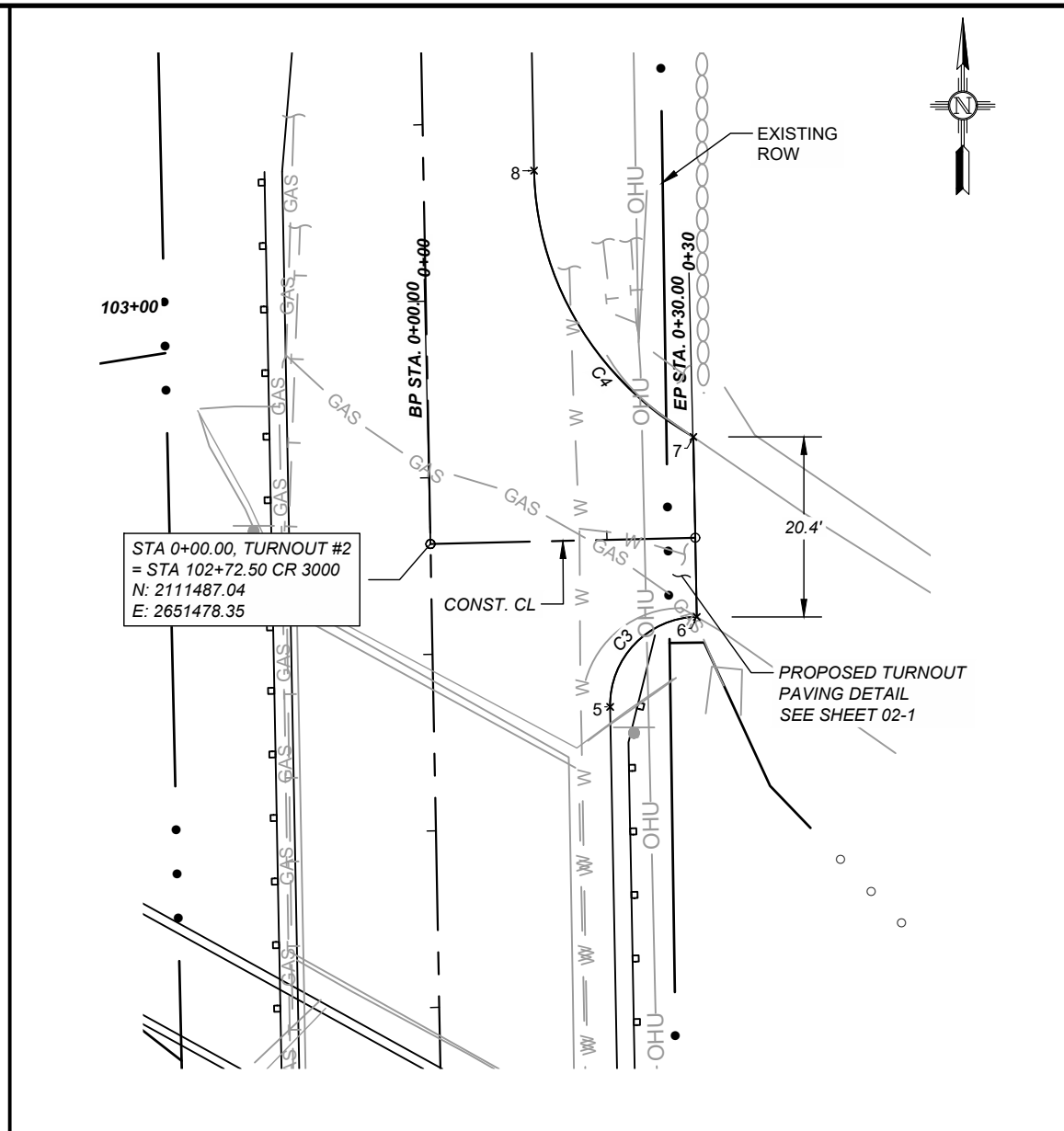
Point Table				
Point #	Raw Description	Elevation	Northing	Easting
40	BASIN	5506.391	2111364.1661	2651572.8467
41	BASIN	5506.391	2111349.4668	2651573.1534
42	BASIN *	5515.760	2111325.7787	2651573.6476
43	BASIN	5517.219	2111322.0890	2651573.7246
44	END BASIN	5516.583	2111317.9165	2651579.8130
45	END BASIN *	5516.185	2111321.6061	2651579.7360
46	END BASIN	5509.250	2111345.8767	2651579.2296
47	END BASIN	5509.250	2111355.8745	2651579.0210
48	END BASIN *	5513.766	2111378.4515	2651578.5499
49	END BASIN	5514.504	2111382.1412	2651578.4730



SAN JUAN COUNTY  
21-22-23



STA 0+35.04, TURNOUT #1  
= STA 101+05.20, CR 3000  
N: 2111319.78  
E: 2651481.51



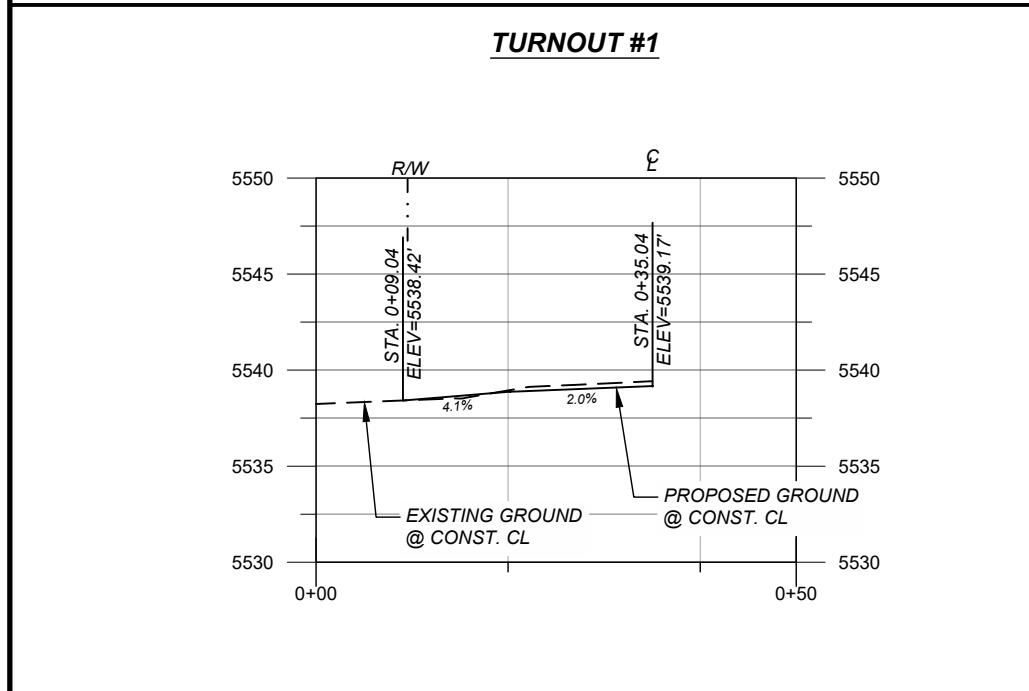
STA 0+00.00, TURNOUT #2  
= STA 102+72.50 CR 3000  
N: 2111487.04  
E: 2651478.35

Point #	Description	Elevation	Northing	Easting
1	BOC	5538.725	2111257.0106	2651470.2131
2	BOC	5538.070	2111299.7433	2651455.8896
3	BOC	5538.208	2111338.8232	2651455.1490
4	BOC	5538.945	2111349.0138	2651464.9577
5	BOC	5539.261	2111468.5873	2651498.6984
6	BOC	5539.148	2111478.7749	2651508.5071
7	BOC	5539.283	2111499.1686	2651508.1207
8	BOC	5539.970	2111529.3317	2651490.0744

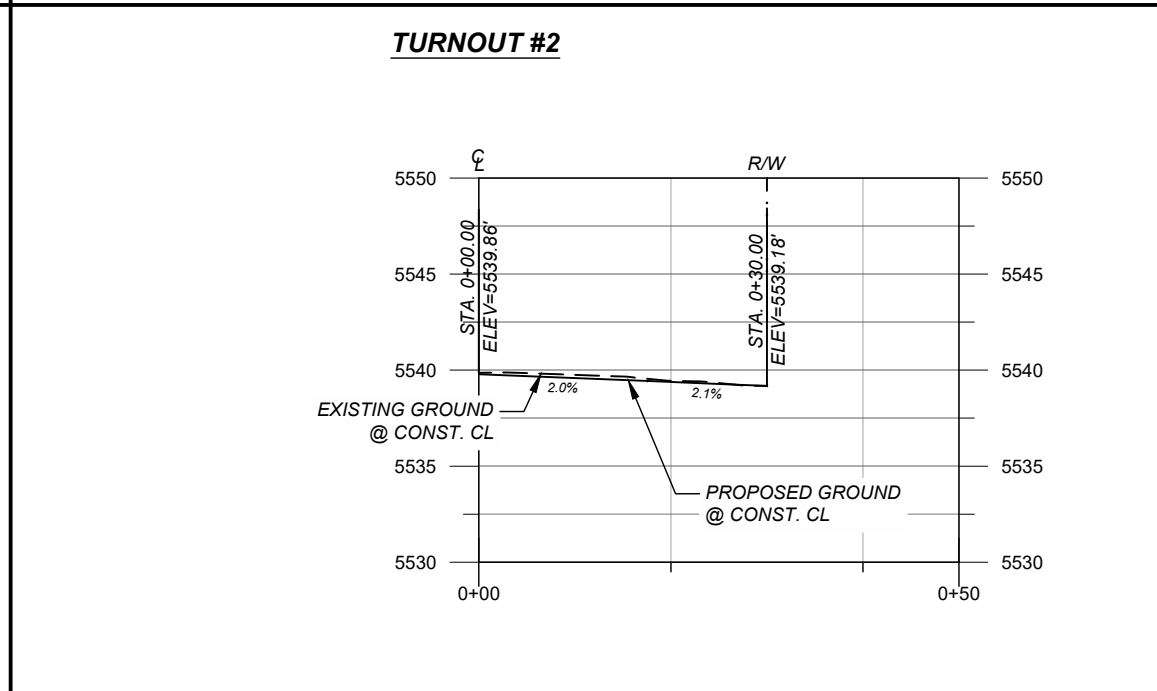
Curve No.	Arc Length	Radius	Delta (Δ)	Chord Bearing
C1	45.67'	75.00'	34°53'25"	N18°34'15"W
C2	15.71'	10.00'	89°57'47"	N43°54'22"E
C3	15.71'	10.00'	90°00'00"	N43°54'22"E
C4	36.75'	35.67'	59°01'44"	N30°53'30"W

PLAN DRAWING SCALE: 1" = 20'

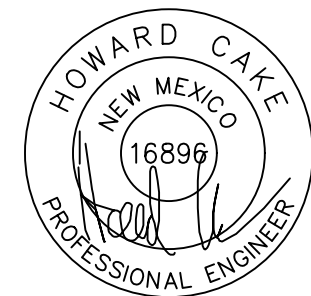
HORIZONTAL SCALE: 1" = 20' VERTICAL SCALE: 1" = 10'



TURNOUT #1



TURNOUT #2



07/12/24

CR 3500 OVER FLORA VISTA ARROYO  
BRIDGE 10137  
TURNOUT PLAN & PROFILE

**SIGNING AND STRIPING GENERAL NOTES**

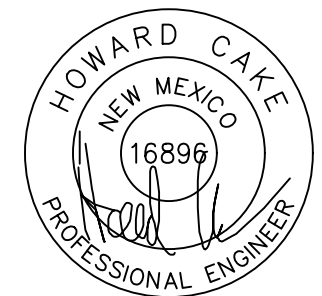
1. ALL REGULATORY, WARNING, SPECIAL, AND GUIDE SIGNS SHALL COMPLY WITH THE REQUIREMENTS DESIGNATED BY PROJECT ENGINEER AND MANAGER. LEGEND AND BACKGROUND TO BE SAME SHEETING TYPE.
2. ONLY 0.125 INCH THICK ALUMINUM PANEL SIGNS ARE PERMITTED FOR WARNING AND REGULATORY SIGNS.
3. ANTI-GRAFFITI COATING, WITH UV INHIBITOR, SHALL BE APPLIED ON ALL REGULATORY, WARNING, GUIDE, AND SPECIAL SIGNS.
4. QUANTITIES MAY VARY AS FIELD CONDITIONS DICTATE, THE CONTRACTOR WILL BE PAID FOR ACTUAL QUANTITIES USED.
5. ALL TRAFFIC CONTROL DEVICES SHALL COMPLY WITH N.M. STATE DEPARTMENT OF TRANSPORTATION STANDARD SPECIFICATIONS FOR HIGHWAY AND BRIDGE CONSTRUCTION (LATEST EDITION) AND ANY APPLICABLE SPECIAL PROVISION AND/OR SUPPLEMENTAL SPECIFICATIONS. THE DEVICES SHALL COMPLY WITH THE CURRENT EDITION OF THE MUTCD WITH REVISIONS.
6. EACH SIGN FACE SHOWN ON PLANS SHALL MEET THE SPECIFICATIONS FOUND IN THE STANDARD HIGHWAY SIGNS MANUAL (CURRENT EDITION) FOR PROPER ARRANGEMENT, SPACING OF LETTERS, LETTER HEIGHT, SYMBOLS AND BORDERS FOR THE SPECIFIED SIZE AND MESSAGE AS SHOWN ON PLANS. ALL SPECIAL SIGN FACE DETAILS SHALL BE SUBMITTED TO THE COUNTY FOR REVIEW AND APPROVAL.
7. SIGN POST LENGTHS ARE MEASURED FROM THE BOTTOM OF THE SIGN TO THE NEAR EDGE OF THE DRIVING LANE. POST LENGTHS SHALL BE A MINIMUM 5 FEET FOR RURAL ROADWAY SECTIONS TO A MINIMUM OF 7 FEET FOR URBAN AND INTERSTATE ROADWAY SECTIONS. SEE NMDOT STANDARD DRAWING 701-02-2/3.
8. ALL SIGNING HARDWARE, INCLUDING, BUT NOT LIMITED TO, BRACKETS BANDING, BUCKLES, FASTENERS, SCREWS, AND WASHERS, ETC. ARE CONSIDERED INCIDENTAL TO SIGN INSTALLATION. NO SEPARATE MEASUREMENT OR PAYMENT WILL BE MADE THEREFOR.
9. THREE (3) - 4 LBS./FT. SIGN POST INSTALLATION APPROVED ONLY IF THE SPAN BETWEEN THE OUTER POSTS EXCEEDS 84" (A SIGN WIDTH OF 96" OR GREATER).
10. 3'-6" BASE POSTS ARE REQUIRED FOR ALL SMALL SIGN POSTS AND BASE POSTS SHALL BE NEXT LARGER SIZE THAN MAIN SIGN POST. SEE NMDOT STANDARD DRAWING 701-02-1/3.
11. SIGN POSTS SHALL BE SQUARE TUBING AND SIZED PER NMDOT STANDARD DRAWING 701-02-1/3.
12. THE LATERAL CLEARANCE OF SIGNS SHALL BE NOT LESS THAN 6 FEET FROM THE EDGE OF SHOULDER OR 12 FEET FROM THE EDGE OF TRAVELED WAY FOR RURAL AREAS AND NO CLOSER THAN 2 FEET FROM FACE OF CURB FOR URBAN AREAS. SEE NMDOT STANDARD DRAWING 701-02-2/3.
13. CONTRACTOR SHALL FIELD VERIFY ALL SIGNING, TEXT, AND LOCATIONS PRIOR TO FABRICATION AND INSTALLATION. NEW SIGN LOCATIONS SHALL BE APPROVED BY THE COUNTY PROJECT MANAGER.
14. HOT THERMOPLASTIC PAVEMENT MARKINGS SHALL BE USED ON ALL STRIPING (LONG LINES, LEGENDS, SYMBOLS, ETC.). THE THERMOPLASTIC PAVEMENT MARKING SHALL BE APPLIED AT A THICKNESS OF 90 MIL. THE APPROVED THERMOPLASTIC MARKING APPLICATION METHOD SHALL BE EITHER GRAVITY EXTRUSION OR RIBBON APPLICATION.
15. THE CONTRACTOR SHALL MARK ALL LOCATIONS IN THE FIELD IN WHICH PAVEMENT MARKINGS, SUCH AS LEGENDS, ARROWS, CROSSWALKS, STOP BARS, ETC., ARE TO BE PLACED. THE PAVEMENT MARKING LAYOUT SHALL BE CONSIDERED INCIDENTAL TO CONSTRUCTION AND NO SEPARATE MEASUREMENT OR PAYMENT WILL BE MADE THEREFOR. THE CONTRACTOR SHALL OBTAIN CONCURRENCE FROM THE COUNTY PROJECT ENGINEER BEFORE THE FINAL MARKINGS ARE APPLIED.
16. WATER BLASTING IS THE ONLY APPROVED METHOD OF EXISTING STRIPE REMOVAL. THE USE OF BLACK PAINT AS A METHOD OF REMOVING OR COVERING EXISTING STRIPING IS STRICTLY PROHIBITED. WHEN WATER BLASTING ON OPEN GRADED FRICTION COURSE (OGFC), OR ON THE FINAL LIFT OF THE EXISTING PAVEMENT, THE CONTRACTOR SHALL APPLY A SEAL TO THE WATER BLASTED AREA. THIS SEAL SHALL BE INCIDENTAL TO REMOVAL OF THE PAVEMENT STRIPE AND NO SEPARATE MEASUREMENT OR PAYMENT WILL BE MADE THEREFOR.



SAN JUAN COUNTY  
21-22-23

NO.	DESCRIPTION	DATE	BY
4			
3			
2			
1			

CR 3500 OVER FLORA VISTA ARROYO  
BRIDGE 10137  
SIGNING AND STRIPING GENERAL NOTES



07/12/24

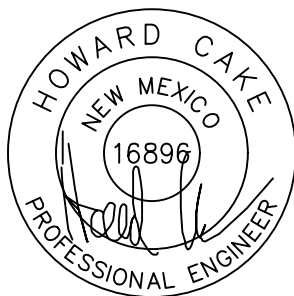




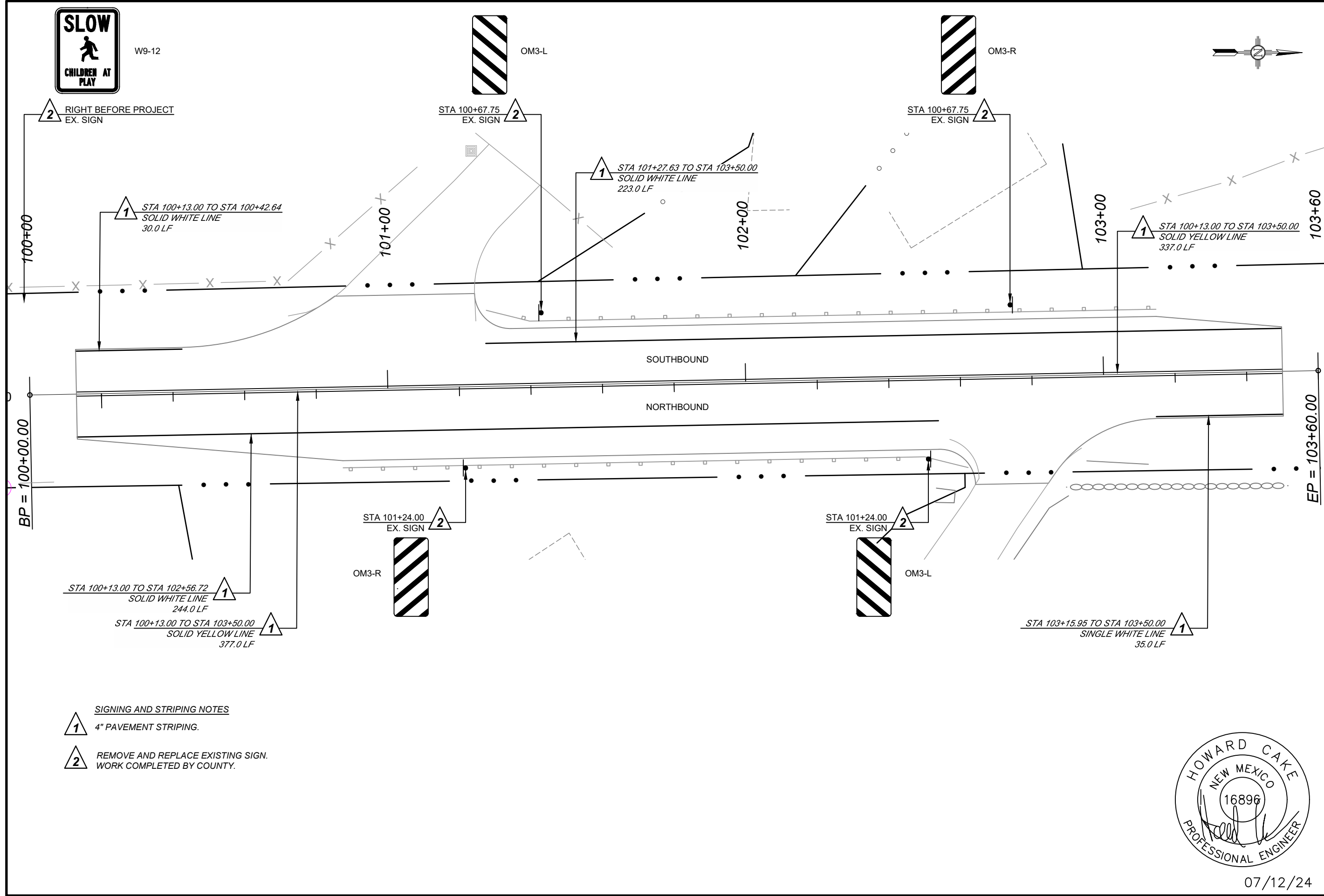
SAN JUAN COUNTY  
21-22-23

NO.	DESCRIPTION	DATE	BY
4			
3			
2			
1			

CR 3500 OVER FLORA VISTA ARROYO  
BRIDGE 10137  
PERMANENT SIGNING AND STRIPING



07/12/24



**SIGNING AND STRIPING NOTES**

- 1 4" PAVEMENT STRIPING.
- 2 REMOVE AND REPLACE EXISTING SIGN. WORK COMPLETED BY COUNTY.